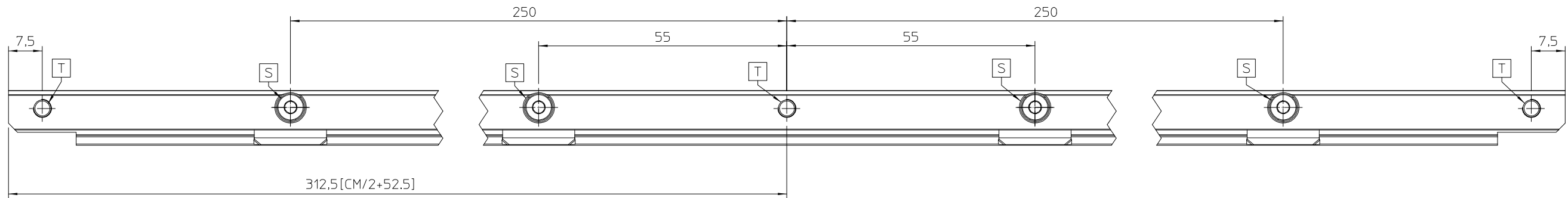
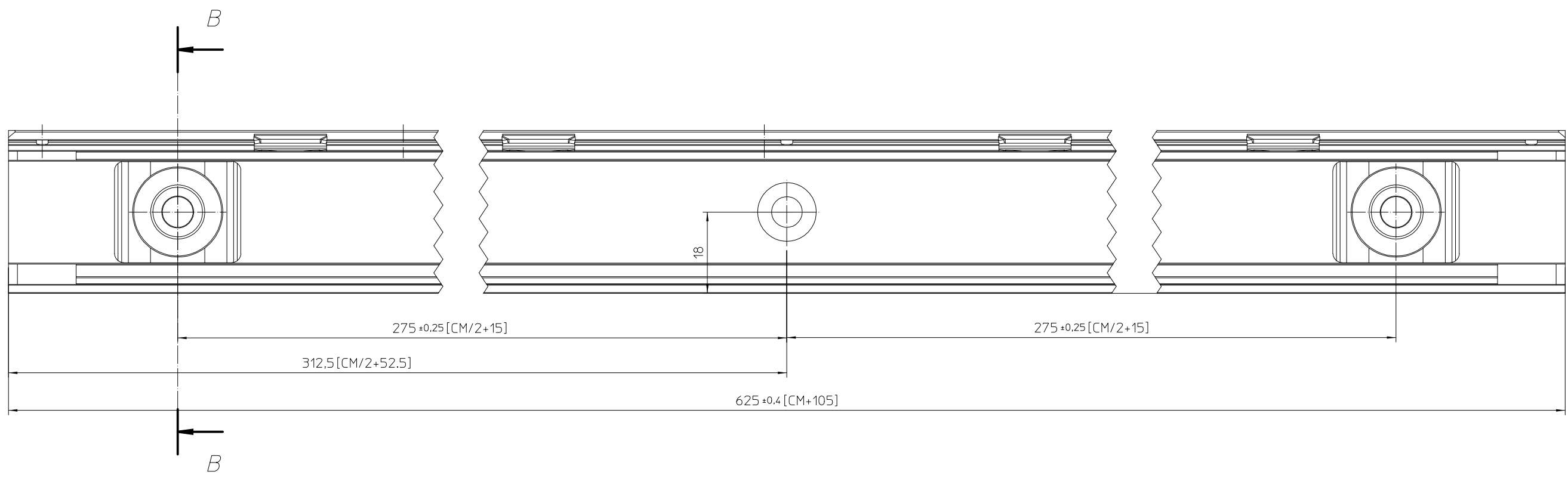
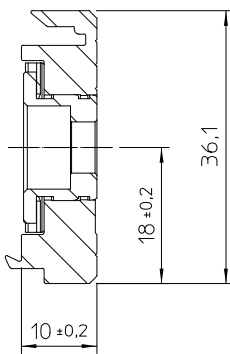


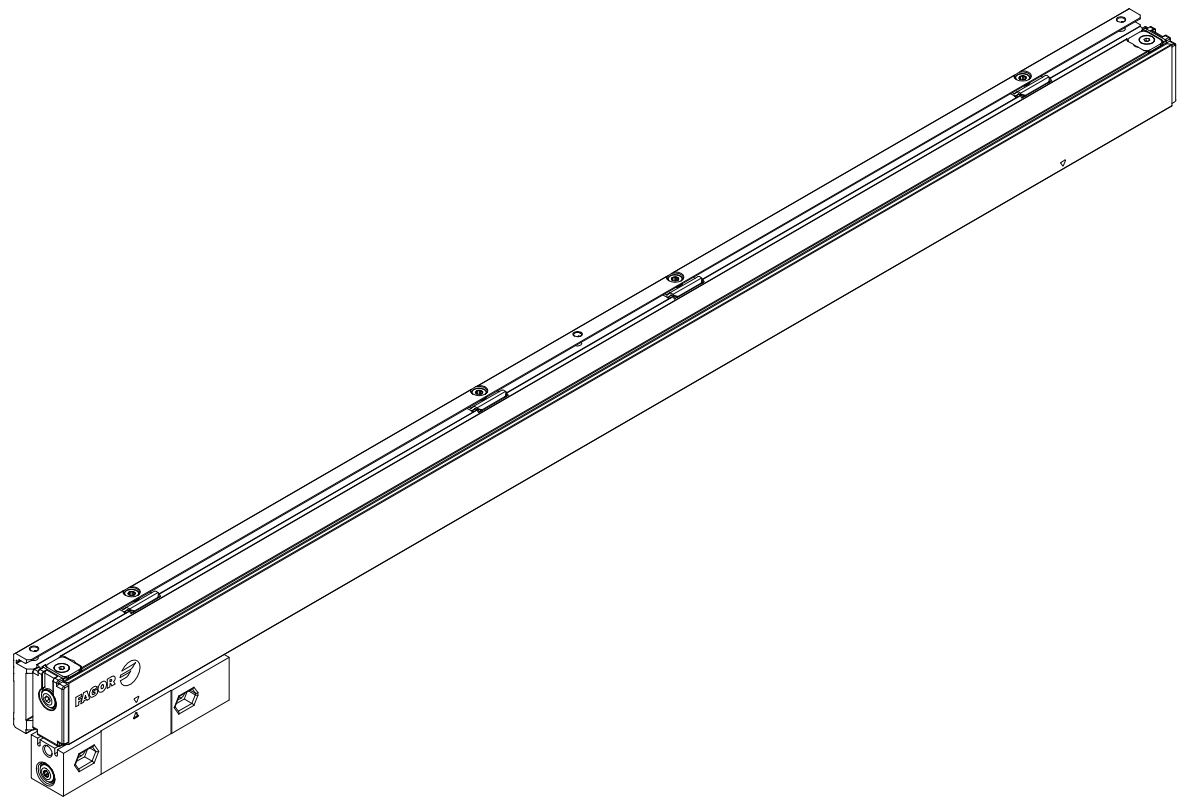
A technical drawing of a 2m spirit level. It features a long, narrow body with a bubble level at one end and a vial at the other. The drawing is a perspective view showing the top and side surfaces.

Section B-B

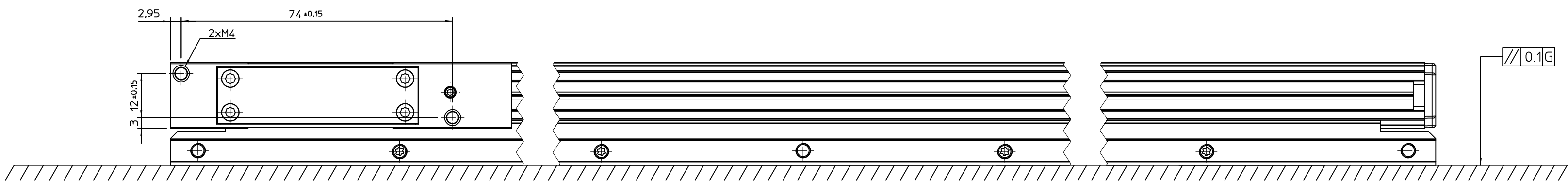


T= Agujeros M5 para conectar a tierra.

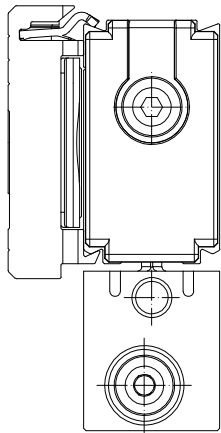
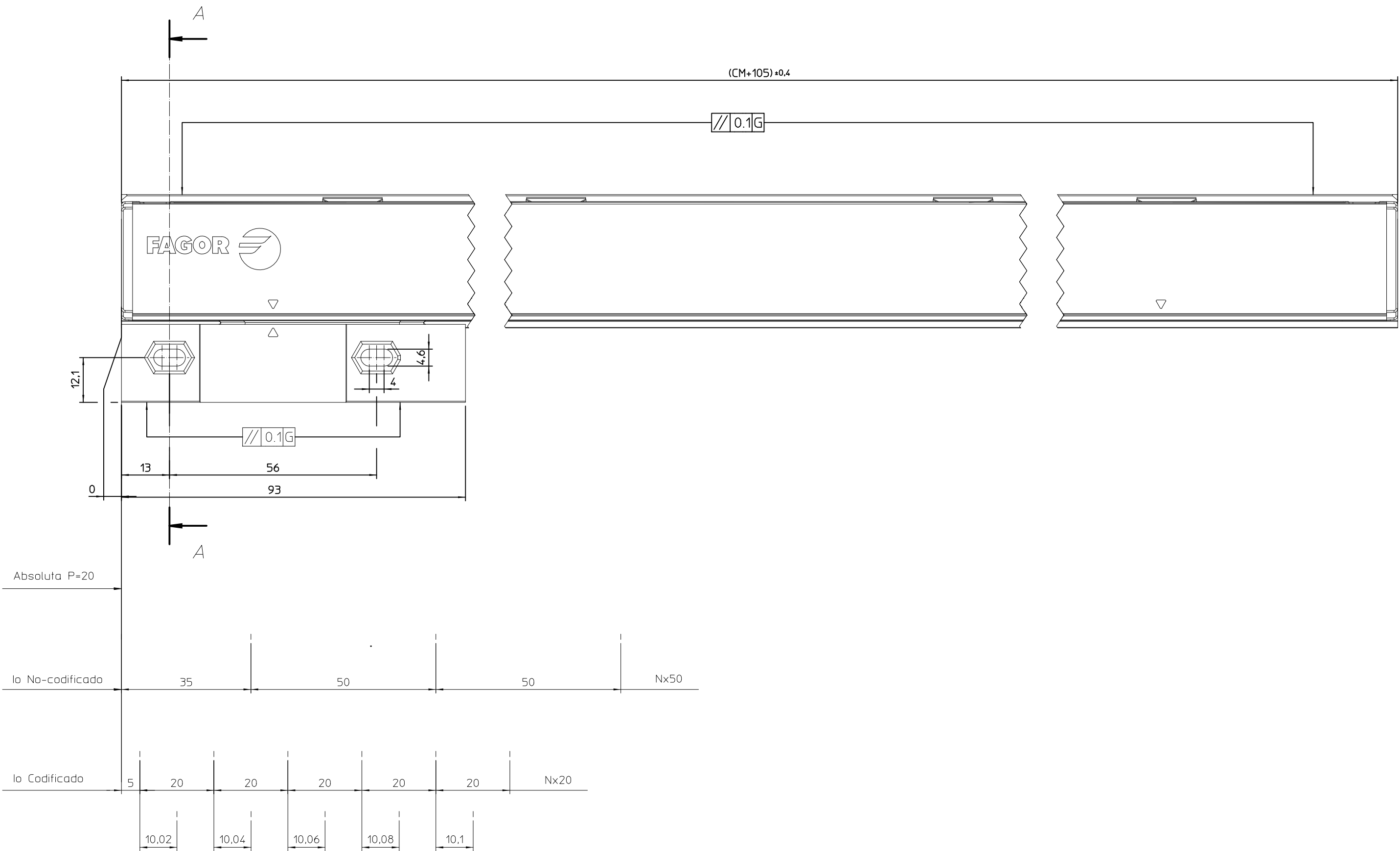
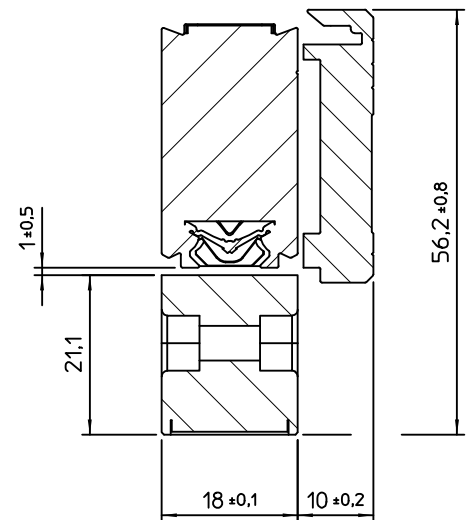
S= Puntos de amarre para la regla en el soporte.



Escala 1:



Section A-A


$$CM = 520 \text{ mm}$$

CM= Curso de medición
G= Guía de la máquina
P= Posición absoluta

FAGOR 